

DURO **TANK**® **15,000L**

'BUILT TOUGH, PROVEN TOUGH'

SMART TANK - SPEC SHEET



*pictured with optional highmast assembly



durotank.com.au



SMART TANK

(ST SERIES)

ST015 - 15,000L SELF BUNDED SMART TANK

SAFE FILL	13,500 L
WEIGHT	4200 kg
SIZE (L x W x H)	6000 x 2450 x 1500 mm

STANDARD FEATURES

- » Designed and manufactured in Australia to Australian Standards
- » Self banded (double wall)
- » Manway for access to inner tank
- » Forklift Pockets and Under tank visibility for visual inspection
- » 2" Bulk fill point for fast refill with Overfill protection and alarm.
- » 4 Lift points for easy moving and transportation (whilst Empty only)
- » Free To Air Vent
- » Calibrated dipstick with safe fill level, Located in a Lockable Spillbox
- » Anti-syphon valve on the suction line to keep your tank primed
- » Provision for fast fill system
- » Domed roof to stop water/dirt pooling
- » Safety signage for Australian regulations
- » Lockable Weather Proof Pump bay with container Style Doors and locks.

OPTIONAL PUMPS

- » 240v Pump
 - » Honda petrol Driven Pump
 - » Ebsray Pumps
 - » Hatz Diesel Driven Pump
 - » Regent Pumps
- Have a pump you want? let the team know

OPTIONAL ACCESSORIES

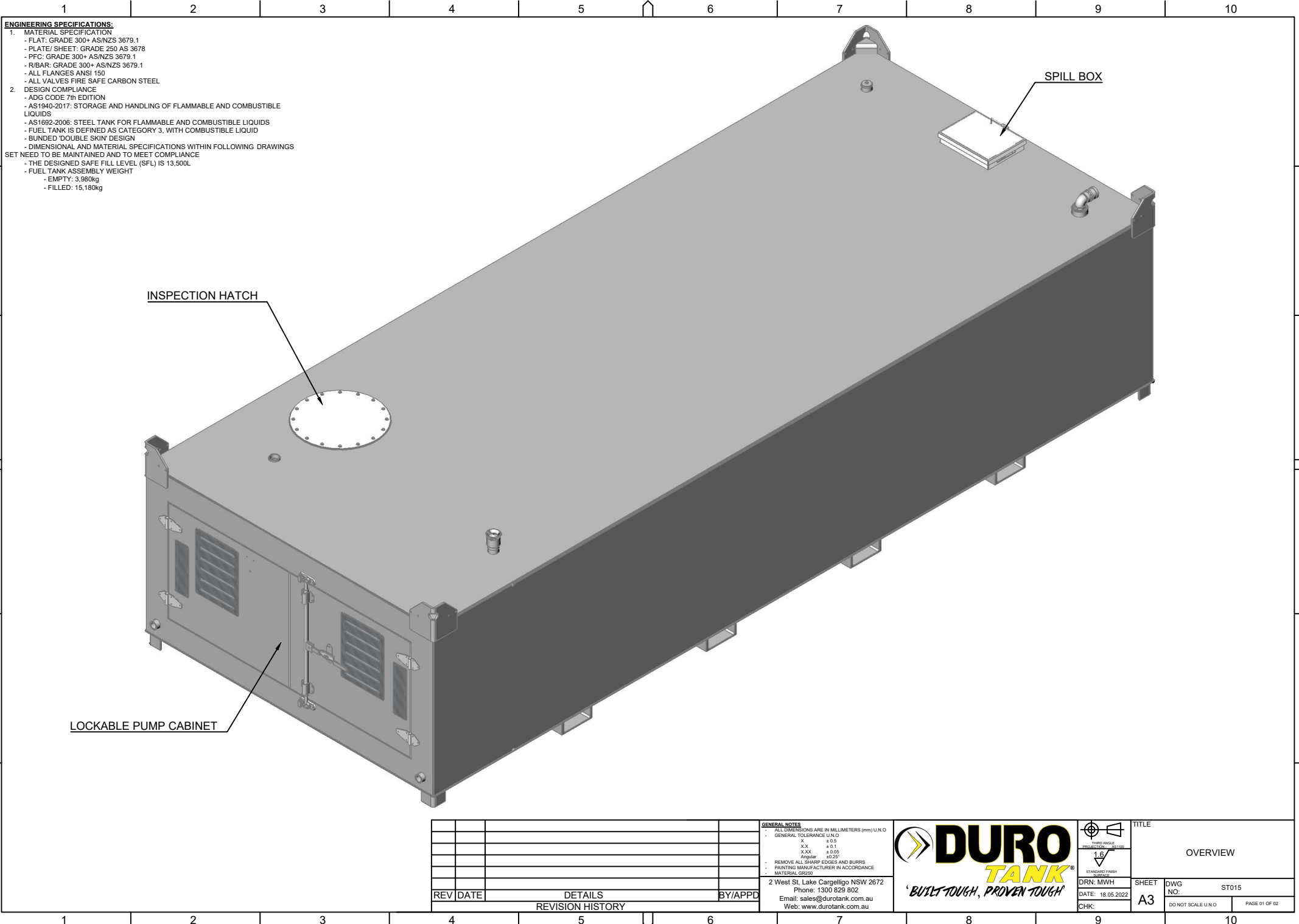
- » 10m, 20m or 30m Heavy Duty Retractable Hose Reel
- » 4m Loose Hose
- » Emergency Stop, Battery Isolator and Reflective Mine Tape
- » High Mast Assembly
- » LED Light Kits
- » Fuel Management Systems
- » Reconnectable Breakaway Coupling
- » Ocio Tank Level Gauge
- » Spill Kits & Fire Extinguishers
- » 250T Drive Over Spill Grate
- » Credit Card Reader (24/7 public sites)
- » Auto Shutoff Nozzle
- » Wiggins Nozzle



p 1300 829 802

e sales@durotank.com.au

w www.durotank.com.au



ENGINEERING SPECIFICATIONS:

1. MATERIAL SPECIFICATION
 - FLAT: GRADE 300+ AS/NZS 3679.1
 - PLATE/ SHEET: GRADE 250 AS 3678
 - PFC: GRADE 300+ AS/NZS 3679.1
 - R/BAR: GRADE 300+ AS/NZS 3679.1
 - ALL FLANGES ANSI 150
 - ALL VALVES FIRE SAFE CARBON STEEL
 2. DESIGN COMPLIANCE
 - ADG CODE 7th EDITION
 - AS1940-2017: STORAGE AND HANDLING OF FLAMMABLE AND COMBUSTIBLE LIQUIDS
 - AS1692-2006: STEEL TANK FOR FLAMMABLE AND COMBUSTIBLE LIQUIDS
 - FUEL TANK IS DEFINED AS CATEGORY 3, WITH COMBUSTIBLE LIQUID
 - BUNDED 'DOUBLE SKIN' DESIGN
- DIMENSIONAL AND MATERIAL SPECIFICATIONS WITHIN FOLLOWING DRAWINGS SET NEED TO BE MAINTAINED AND TO MEET COMPLIANCE
- THE DESIGNED SAFE FILL LEVEL (SFL) IS 13,500L
 - FUEL TANK ASSEMBLY WEIGHT
 - EMPTY: 3,980kg
 - FILLED: 15,180kg

INSPECTION HATCH

SPILL BOX

LOCKABLE PUMP CABINET

REV	DATE	DETAILS	BY	APPD

GENERAL NOTES
 ALL DIMENSIONS ARE IN MILLIMETERS (mm) U.N.O
 GENERAL TOLERANCE U.N.O
 X ±0.5
 XX ±0.1
 XXX ±0.05
 Angular ±0.25°
 REMOVE ALL SHARP EDGES AND BURRS
 PAINTING MANUFACTURER IN ACCORDANCE
 MATERIAL GR250

2 West St, Lake Cargelligo NSW 2672
 Phone: 1300 829 802
 Email: sales@durotank.com.au
 Web: www.durotank.com.au



 THIRD ANGLE PROJECTIONS 021100		STANDARD FINISH 021100		TITLE OVERVIEW	
DRN: MWH	SHEET	DWG	ST015	NO:	
DATE: 18.05.2022	A3	DO NOT SCALE U.N.O	PAGE 01 OF 02		
CHK:					

