



**Liverpool
Plains**
Shire Council



**Local Land
Services**

North West Regional Best Practice Guide for: St. John's wort

Botanical Name: *Hypericum perforatum*

Common Name: St John's wort

Priority Weeds Objective - Containment

These weeds are widely distributed in the region. While broad scale elimination is not practicable, minimisation of the biosecurity risk posed by this weed is reasonably practicable.

St John's wort: One St. John's wort plant can produce 30,000 seeds annually. The sticky seeds are spread primarily by animals and may remain viable in the ground for more than 20 years. It is important that all known infestation sites are regularly monitored. All new plants must be treated before seed set, as everyone left untreated has the potential to produce thousands of new plants.

General Biosecurity Duty – Biosecurity Act 2015

A **general biosecurity duty** applies to all dealings (as defined) with this species. Any person who deals with this species who knows (or ought to know) of any biosecurity risk posed by the plant, a carrier or a dealing, has a duty to ensure the biosecurity risk is prevented, eliminated or minimised, so far as is reasonably practicable.



Photo: Mike Whitney

Regional Recommended Measure: An **exclusion zone** is established for all lands in the region, except the core infestation area comprising the Gunnedah Shire Council, Gywdir Shire Council, Liverpool Plains Shire Council and Tamworth Regional Council.

Outcomes to demonstrate compliance with GBD

Whole Of region: Land managers should mitigate the risk of the plant being introduced to their land

Within exclusion zone: Land managers should eradicate the plant from the land and keep the land free of the plant, A person should not deal with the plant, where dealings include but are not limited to buying, selling, growing, moving, carrying or releasing the plant, Notify local control authority if found.

Within core infestation:

Land managers should mitigate spread of the plant from their land, A person should not buy, sell, move, carry or release the plant into the environment, Land managers should reduce the impact of the plant on assets of high economic, environmental and/or social value.

Liverpool Plains Shire Local Control Requirements

Core infestation area within LPSC

1. Reduce the size and density of infested area by physical, mechanical and or chemical control methods, and
2. Eliminate or minimise the risk of spread onto neighbouring lands.

Exclusion zone within LPSC

1. The land is kept free of the plant, and
2. Land managers will mitigate the risk of the plant being introduced to their land.

Note: Information showing these Zones within Liverpool Plains Shire Council area please refer to Map attached to this Weed Management Plan

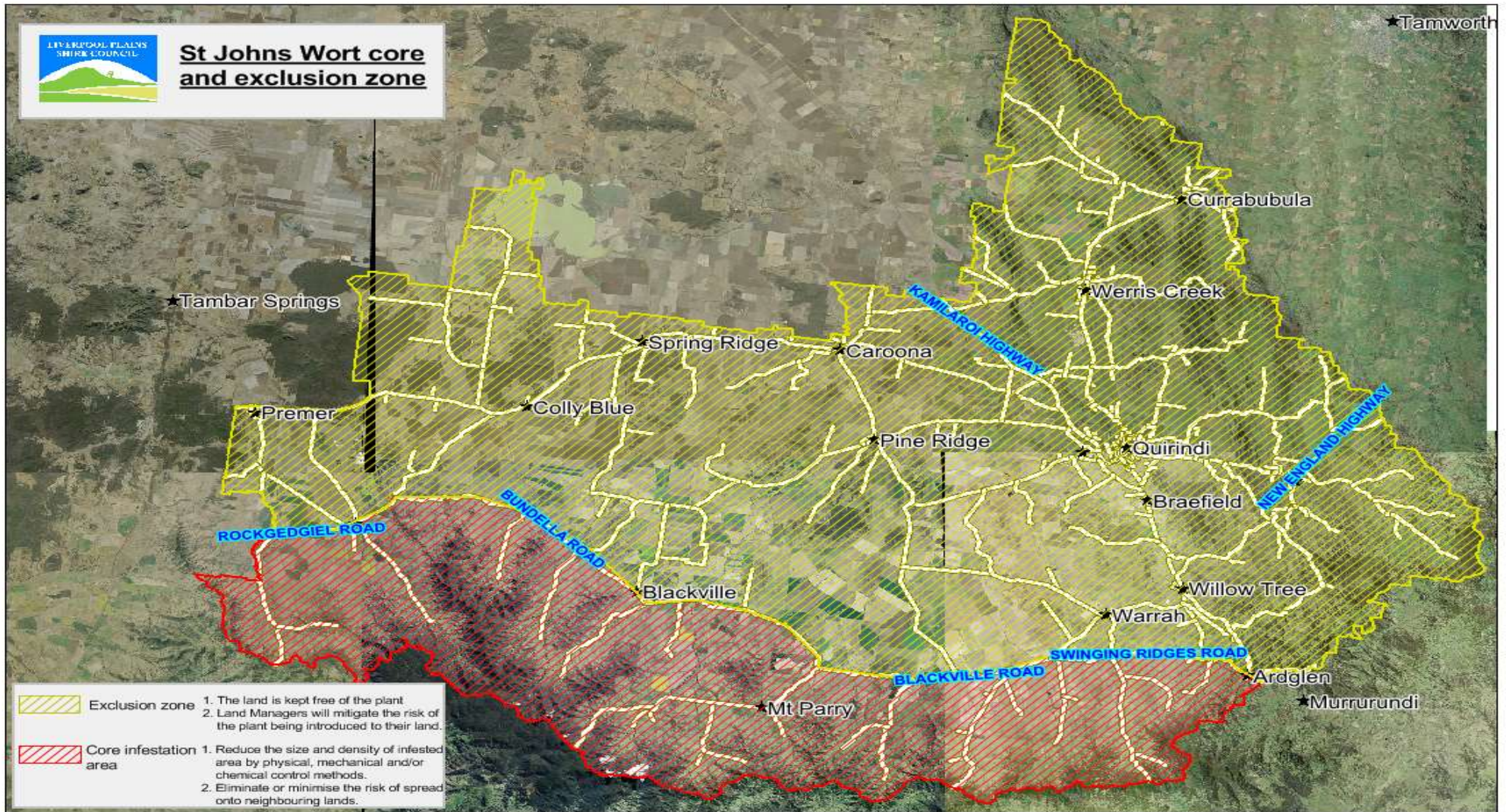
Penalty for not complying with the general biosecurity duty or a direction issued under the Biosecurity Act 2015

The maximum penalty is:

- in the case of an individual—\$220,000 and, in the case of a continuing offence, a further penalty of \$55,000 for each day the offence continues, or
- in the case of a corporation—\$440,000 and, in the case of a continuing offence, a further penalty of \$110,000 for each day the offence continues.

The maximum penalty for an offence that is committed negligently is:

- in the case of an individual—\$1,100,000 and, in the case of a continuing offence, a further penalty of \$137,500 for each day the offence continues, or
- in the case of a corporation—\$2,200,000 and, in the case of a continuing offence, a further penalty of \$275,000 for each day the offence continues.



Linkage to Plans/Strategies

- North West Regional Strategic Weed Management Plan 2017-2022
- NSW Biosecurity Strategy 2023-2027
- NSW Biosecurity Act 2015
- NSW Invasive Species Plan 2018- 2021
- *Pesticides Act 1999* and Pesticide Regulation 2017

References

- *NSW DPI Website /WeedWise/ NSW Weed Control Handbook 2018 7th Edition.*

For Further Information contact:

Liverpool Plains Shire Council's
 Authorised Officers (Weeds)
 60 Station Street
 Quirindi NSW 2343
 PH: (02)67461755

St John's wort Control Calendar

APRIL	MAY	JUNE	JULY	AUGUST	SEPT	OCT	NOV	DEC	JAN	FEB	MAR
-------	-----	------	------	--------	------	-----	-----	-----	-----	-----	-----

GROWTH CYCLES-

GERMINATION	GERM/SEEDLING	UPRIGHT GROWTH	FLOWERING	SENESCENT
PERENNIAL GROWTH AFTER GOOD RAINS			UPRIGHT GROWTH	FLOWERING
PERENNIAL GROWTH AFTER GOOD RAINS			UPRIGHT GROWTH	FLOWERING
PERENNIAL GROWTH AFTER GOOD RAINS			UPRIGHT GROWTH	FLOWERING

INTERGRATED CONTROL TECHNIQUES AND ALTERNATIVES

HIGH STOCKING RATES INTENSIVE GRAZING				HERBICIDE OPTIMUM			
PASTURE SOWING/ ESTABLISHMENT/MANAGEMENT				PASTURE SOWING/ ESTABLISHMENT/MANAGEMENT			
HEAVY GRAZING MAY REDUCE FLOWERING & POTENTIAL SEED SET							

Note: Managed heavy grazing and /or slashing will not kill St Johns wort

Control Methods/Techniques: An integrated control program offers the most effective control outcome. Combinations of the following methods can be effective.

Manual/Mechanical Physically and carefully remove and burn mature flower heads with viable seed. Isolated annual plants with a single stalk can be destroyed by removing them. All root material must be completely removed in the process or the plants will re-generate.

Chemical: There are a number of Herbicides registered for use to Spot spray and boom spray St John's wort.

Cultural/Biological: The use of perennial pastures and grazing management, together with the presence of biological control agents may offer some control.

Registered Herbicide Application Rates:

Please refer to the NSW DPI Website NSW WeedWise. <https://weeds.dpi.nsw.gov.au> for current up to date permits and Registered Chemicals.

Or to NSW Weed Control Handbook 2018 7th Edition for Chemical Options.

Critical Comments:-

- Apply to actively growing plants.
- Consult your LCA Biosecurity Officer- Weeds for application tips.
- Always read and follow the Label instructions and SDS of respective herbicides.

NOTE:

- (a) All Control Techniques involving herbicide use, must comply with the directions on the herbicide label or the conditions set out in a current permit to use a nominated herbicide.
- (b) All chemical control programs must be carried out in accordance with the *Pesticides Act 1999* and Pesticide Regulation 2017.
- (c) All Chemical application programs used must be undertaken by or be designed and supervised by an appropriately Certified and Accredited Chemical user.
- (d) Growth patterns and changes to optimum treatment times will vary with seasonal conditions due to rain events and air temperature changes, that may coincide with soil moisture availability.

Disclaimer:

This document has been prepared by the North West Regional Weed Committee and Local Government Control Authorities in good faith and on the basis of best available information. Users of this document must obtain their own specific advice and conduct their own investigations and assessments of their individual circumstances.